



## Rogue Wave HostAccess® 7.40J Installation Guide

.....	1
<b>Rogue Wave HostAccess® 7.40J Installation Guide.....</b>	<b>1</b>
<b>HostAccess Installations.....</b>	<b>2</b>
Standard Installation - Desktop and Windows Terminal Server/Citrix Server.....	3
Workstation Installation .....	4
Installing HostAccess onto a File Server.....	4
Installing on Each User's PC .....	4
Administrative Installation.....	5
General Information about Silent Installations .....	6
Common InstallShield Installer (Setup.exe, Web download files only) command line options .....	6
Common MSI Installer (*.msi) command line options: .....	7
Silent Installation on a File Server.....	9
Silent Workstation Installation .....	10
Advertisement Installation .....	11
<b>Host Program Installation.....</b>	<b>12</b>

## **HostAccess Installations**

If you have any previous versions of HostAccess installed, we recommend you uninstall these prior version(s) and reboot before attempting this installation. The installer will then prompt you that this is an upgrade installation.

Before installing, you may want to review the Release Notes for any Installer issues with this release.

We recommend installing HostAccess as Administrator when installing on Windows 7 or higher.

## Standard Installation - Desktop and Windows Terminal Server/Citrix Server

To install HostAccess:

1. You can install HostAccess by downloading and running the installation file or from a CD:
  - a. To download the installation file, follow the instructions sent to you by Rogue Wave. Using Windows Explorer navigate to the file you downloaded and **double-click** on it to start the InstallShield Wizard.
  - b. To use the CD, insert it into your CD drive; the Installation Wizard should start automatically. If the installation wizard fails to start, open My Computer, navigate to the HostAccess CD in your CD Drive and **double-click** on *Setup.exe*. The HostAccess CD Browser screen is displayed.
2. **Click Next** on the Welcome screen.
3. **Review** the license agreement, **select "I accept the terms in the license agreement"** and click **Next**.
4. **Enter** your name and company name in the *User Name* and *Organization* fields respectively.
5. If you *purchased* HostAccess, **enter** the serial number sent to you in the *Serial Number* field.
6. If you are *evaluating* HostAccess, **leave** the default, "30 Day Evaluation Only", in the Serial Number field. Click **Next**.
7. **Select** the destination folder for the install. **Click Next**.
8. **Choose** either *Typical* or *Custom* Installation Type. **Click Next**.
  - a. If you chose the *Typical* installation type, proceed to the next step, **To complete...**
  - b. If you chose the *Custom* installation type, the Custom Setup dialog box is displayed.
    - i. Select *Host Utility Files* (Host Programs) and/or *Workstation Installation Files*. See *Host Program Installation* in this document for a detailed example.
    - ii. **Click Next**.
9. To complete the installation, **click Install**.
10. The *Installing HostAccess* screen displays the installation's progress.
11. When the installation completes successfully, the InstallShield Wizard Completed screen is displayed.
12. **Check "Launch HostAccess"** to start the program when the installer closes and **click Finish**.

## Workstation Installation

Workstation Installations are performed in two parts: the first part installs HostAccess onto a file server, the second points a workstation to the HostAccess installation on the server. The end-user can then run HostAccess from the server on their client.

**Notes:** *This installation type can increase HostAccess loading times as all required files must be downloaded from the network during application start-up on the workstation.*

*This installation type is not required when installing onto a Terminal Server/Citrix Server.*

*A special "server" license is needed for a workstation installation.  
The multi-user stand-alone license does not allow more than one user on one machine.*

### Installing HostAccess onto a File Server

1. Follow the Standard Installation above, **select Custom** Install and then **select** the **Workstation Installation Files** feature.
2. Once the installation is complete, **create** a network share to the HostAccess installation folder.
3. **Configure** permissions on the share so that all required users have **Change** permissions.
4. **Configure** NTFS permissions on the HostAccess installation folder so that all required users have **Read** permissions.
5. Verify that your users have **Modify NTFS** permissions on the HostAccess\License folder.

### Installing on Each User's PC

1. From the workstation, **navigate** to the file share created above.
2. **Double-click** **wkstnins.exe** to launch the Workstation installer.
3. **Click Next** on the Welcome screen.
4. **Review** the license agreement, **select "I accept the terms in the license agreement"** and **click Next**.
5. **Click Install** to start the installation.
6. The *Installing HostAccess* screen displays the installation's progress.
7. When the installation completes successfully, the InstallShield Wizard Completed screen is displayed.
8. **Click Finish**.

To uninstall a Workstation Installation, use the Control Panel, go to Programs, search for *HostAccess® Workstation*, **right click** this entry then choose **Uninstall** from the context menu.

## Administrative Installation

An administrative installation installs a source image of the installer onto a file share. Users who have access to this file share can then install HostAccess from this source. This differs from a workstation install, where the required files are installed locally.

An administrative installation creates an uncompressed source image for a product, typically to be used for installing or running an application from a network location. An administrative installation is not a typical installation, in that it does not create any shortcuts, register COM servers, create an Add or Remove Programs entry, and so on. Often an administrative installation enables a user to install the product in such a way that its features run from the uncompressed installation source.

Administrative installations are also useful when creating a Windows Installer patch, which requires uncompressed images of the earlier and current versions of a product in order to compute binary file differences. An administrative installation is performed by running the `msiexec` executable with the `/a` switch as shown below.

To run an Administrative Installation:

1. Start the installation by either:
  - a. using the command, where `<drv>` is the drive letter and `<path>` is the location of the executable:

```
<drv>:\<path>\HostAccess<version>.exe /a
```

where `<version>` is the product version number for HostAccess, i.e. 7.40j.

- b. or, work with the MSI file directly, where `<drv>` is the drive letter and `<path>` is the location of the executable:

```
Msiexec /a "<drv>:\<path>\HostAccess.msi"
```

Examples,

```
C:\Windows\System32\msiexec /a C:\Temp\HostAccess.msi
```

```
msiexec /a C:\Users\<Logged in User's Name>\Downloads\HostAccess.msi
```

2. **Click *Next*** on the Welcome screen
3. **Select** the network location of the source image and **click *Install***.
4. The Installing HostAccess screen displays the installation's progress.
5. The installation has finished successfully when the InstallShield Wizard Completed screen is displayed.
6. **Click *Finish*** to close the installation wizard.

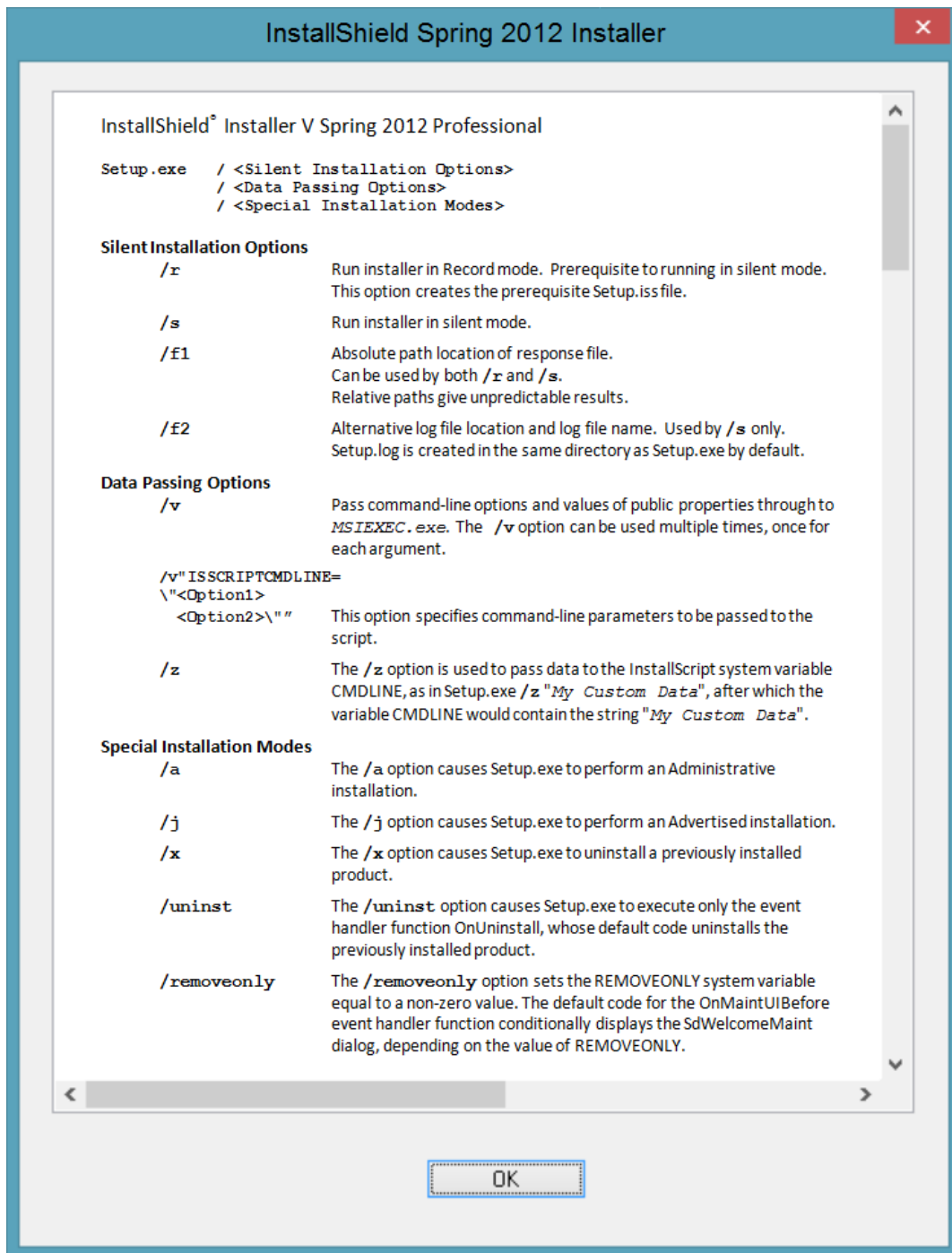
To uninstall an Administrative Installation, simply delete the uncompressed source image files.

For more detailed information about Windows Installer Features, refer to

[http://en.wikipedia.org/wiki/Windows\\_Installer#Other\\_features](http://en.wikipedia.org/wiki/Windows_Installer#Other_features)

## General Information about Silent Installations

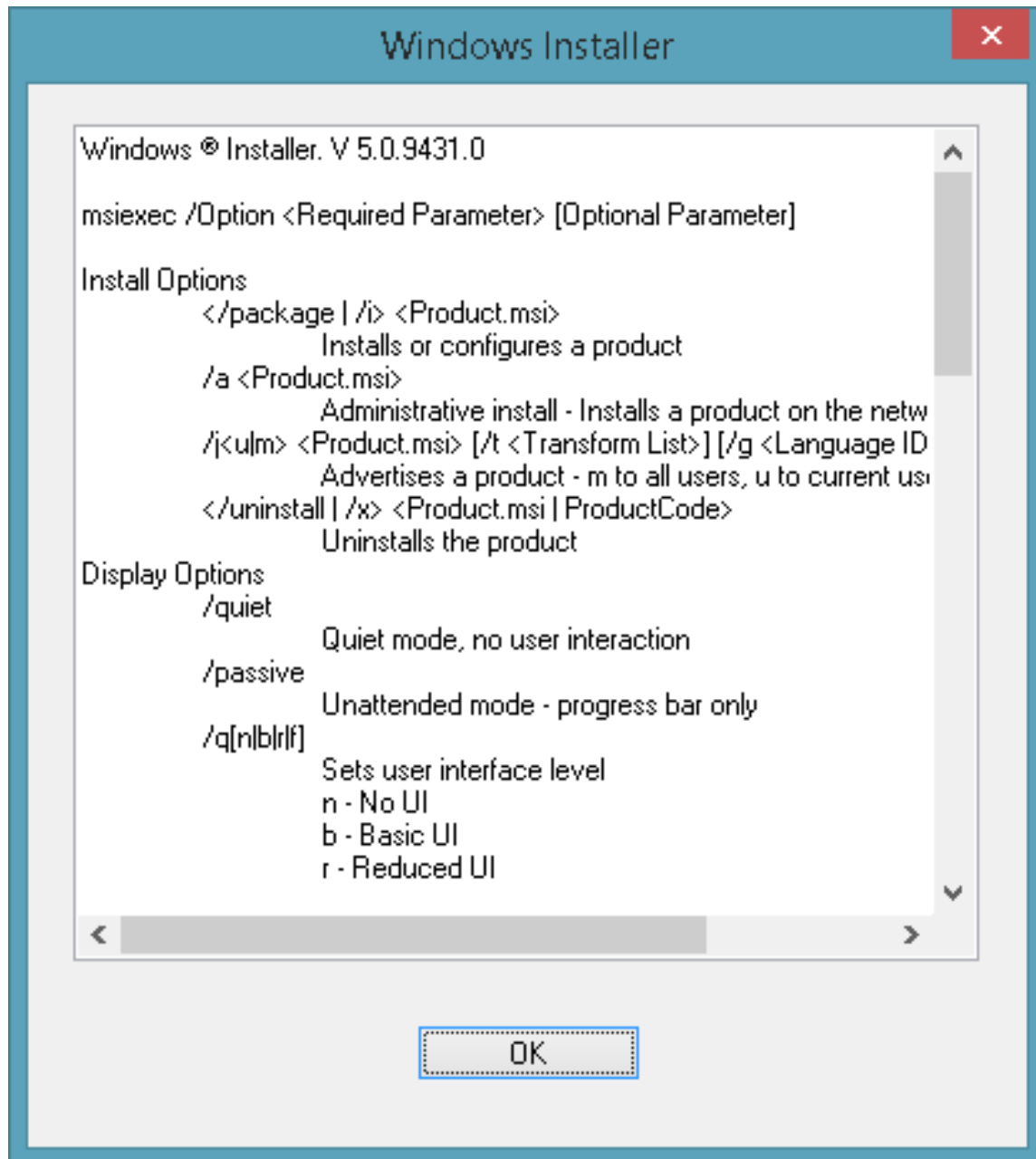
### Common InstallShield Installer (Setup.exe, Web download files only) command line options



Refer to

<http://helpnet.flexerasoftware.com/installshield19helplib/helplibrary/SetupPrereqEditorCmdLine.htm>  
for detailed InstallShield 2012 Spring command line options.

**Common MSI Installer (\*.msi) command line options:**



Refer to

[http://msdn.microsoft.com/en-us/library/windows/desktop/aa372024\(v=vs.85\).aspx](http://msdn.microsoft.com/en-us/library/windows/desktop/aa372024(v=vs.85).aspx)  
for detailed MSI command line options.

## Supported Silent Installation Command Line Options

Options	Description	Default Value
<b>USERNAME</b>	Name of user installing HostAccess	[ <i>Supplied by Windows</i> ]
<b>COMPANYNAME</b>	Name of company installing HostAccess	[ <i>Supplied by Windows</i> ]
<b>INSTALLDIR</b>	Installation folder	<b>x86:</b> C:\Program Files\Rogue Wave\HostAccess <b>x64:</b> C:\Program Files (x86)\Rogue Wave\HostAccess
<b>SERIALNO</b>	Serial number used to license HostAccess	<b>30 Day Evaluation Only</b>
<b>INSTALLLEVEL</b>	Components to be installed:  1 = Main Program Files 2 = Main Program Files and Help Files 3 = Main Program Files, Help Files and Samples 4 = Main Program Files, Help Files, Samples and Host Utility Files 5 = Main Program Files, Help Files, Samples, Host Utility Files and Workstation Installation Files	<b>3</b>
<b>SKIPAPPSEARCH</b>	Skips the previous version check:  0 = Search for previous versions 1 = Skip search for previous versions	<b>0</b>



## Silent Installation on a File Server

You can install HostAccess with the default installation settings but without displaying any dialog boxes or messages during installation.

To run a silent installation:

- a. use the InstallShield command line options, where `<drv>` is the drive letter and `<path>` is the location of the executable:

```
<drv>:\<path>\HostAccess<version>.exe /s /v"/qn"
```

where `<version>` is the product version number for HostAccess, i.e. 7.40j.

- b. or, work with the MSI file directly using MSI command line options, where `<drv>` is the drive letter and `<path>` is the location of the executable:

```
Msiexec /package "<drv>:\<path>\HostAccess.msi" /passive
```

To override any of the default installation settings, such as the Serial Number used to license HostAccess:

use the InstallShield command line options, where `<drv>` is the drive letter and `<path>` is the location of the executable:

```
<drv>:\<path>\HostAccess<version>.exe /s /v"/qn  
USERNAME="John Smith\" COMPANYNAME="John Smith Ltd\  
SERIALNO="123456789012-ABCD01\" INSTALLDIR="D:\Program  
Files\HostAccess\" INSTALLLEVEL="2\" SKIPAPPSEARCH="1\""
```

where `<version>` is the product version number for HostAccess, i.e. 7.40j.

or, work with the MSI file directly using MSI command line options, where `<drv>` is the drive letter and `<path>` is the location of the executable:

```
Msiexec /package "C:\Users\<Logged in User's  
Name>\Downloads\HostAccess.msi" /passive USERNAME="John Smith"  
COMPANYNAME="John Smith Ltd" SERIALNO="123456789012-ABCD01"  
INSTALLDIR="D:\Program Files\HostAccess" INSTALLLEVEL="2"  
SKIPAPPSEARCH="1"
```

## Silent Workstation Installation

Just as you can install HostAccess Workstation to a File Server silently, you can install a HostAccess Workstation silently.

To run a silent Workstation installation from the HostAccess installation folder:

- use the command, where <drv> is the drive letter and <path> is the location of the executable:

```
<drv>:\<path>\WkStnIns.exe /s /v"/qn"
```

- or, work with the MSI file directly, where <drv> is the drive letter and <path> is the location of the executable:

```
Msiexec /i "<drv>:\<path>\HostAccessWorkstation.msi" /qn
```

If you wish to run the installer from another location (e.g. when performing a remote software installation via Group Policy) you must provide the HostAccess installation path as part of the command line.

To run a silent installation from another location:

- use the command, where <drv> is the drive letter and <path> is the location of the executable:

```
C:\Program Files (x86)\HostAccess\WkStnIns.exe /s /v"/qn  
SETUPEXEDIR="\\ServerName\ShareName\""
```

- or, work with the MSI file directly, where <drv> is the drive letter and <path> is the location of the executable:

```
Msiexec /i "C:\Temp\HostAccessWorkstation.msi" /qn  
SETUPEXEDIR="\\ServerName\ShareName"
```

**Note:** *\\ServerName\ShareName should be replaced with the location of your remote HostAccess installation.*

## Advertisement Installation

HostAccess Installer can *advertise* or defer the installation of a product rather than actually installing it. The product will appear installed to the user, but it will not actually be installed until run for the first time by triggering an entry point, i.e. by means of a Start menu shortcut, opening a document that the product is configured to handle, or invoking an advertised COM class. A package can be advertised by an administrator using Group Policy or other deployment mechanism, or by running the `msiexec` executable with the `/jm` (for per-machine advertisement) or `/ju` (for per-user advertisement) switch. It should also be noted that some MSI packages authored in InstallShield may prevent the use of these and other Native MSI features.

The user must have administrator privileges to complete the advertised installation; in most workplaces, end users are not administrators and this method of distribution will fail. Microsoft created a workaround via Group Policies to "Elevate user privileges" during MSI installations. This is often seen by system administrators as compromising security since any MSI would automatically gain administrator privileges.

This installation adds an entry to Add/Remove Programs and shortcuts to the Start menu. It advertises or defers HostAccess's main program files on the user's PC. Features such as Help Files, Samples, Workstation Installation Files and Host Utility Files are not advertised but can be added using Add/Remove Programs in the Windows Control Panel.

To advertise or defer HostAccess to your users:

- use the command, where `<drv>` is the drive letter and `<path>` is the location of the executable:

```
<drv>:\<path>\HostAccess<version>.exe /j
```

where `<version>` is the product version number for HostAccess, i.e. 7.40j.

- or, work with the MSI file directly, where `<drv>` is the drive letter and `<path>` is the location of the executable:

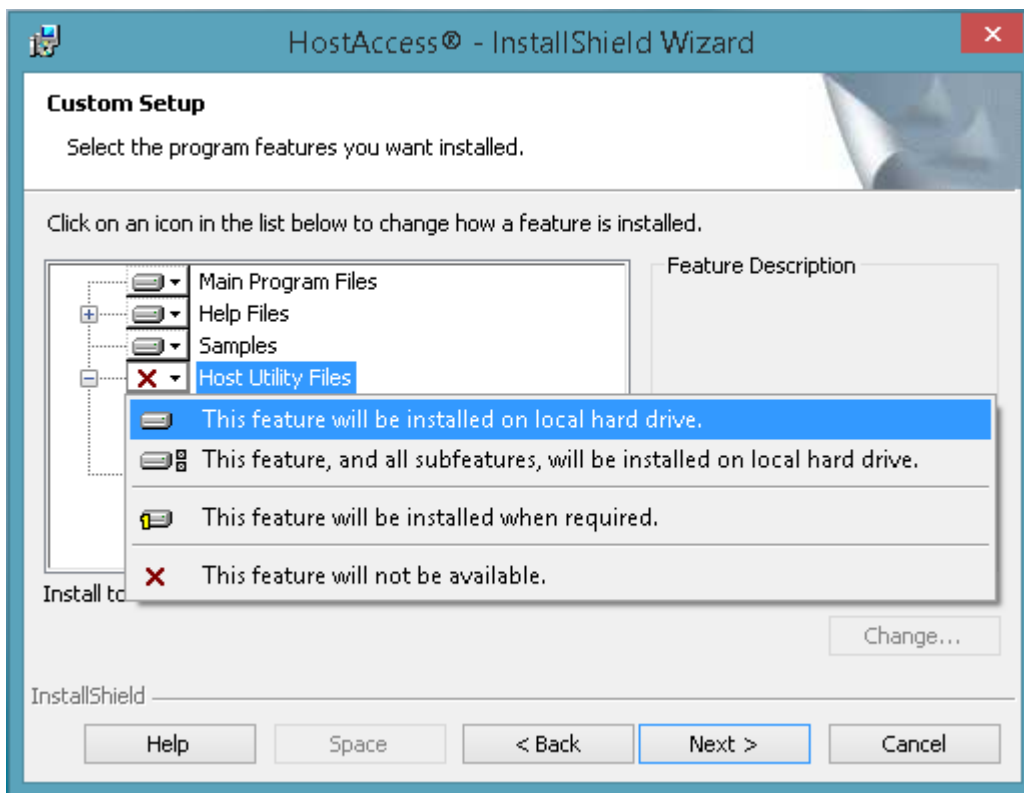
```
Msiexec /j "<drv>:\<path>\HostAccess.msi"
```

## Host Program Installation

The Host Program files, or the files in the HOSTPROG directory, can be installed or uploaded to the PICK system, whether the PICK system is located locally or on a server, AFTER HostAccess has been installed using one of the installation methods above.

To install the Host Programs, aka *Host Utility Files*, on the client machine,

1. **Run** the installer and **select** the *Custom* radio button in the Setup Type dialog.
2. **Select** the *Host Utility Files* drop down box, **not** the +/- tree node, from the Custom Setup dialog as shown below.



3. **Select** the option labeled, “*This feature, and all subfeatures, will be installed on local hard drive.*”
4. **Click** the *Next* button on the Custom Setup dialog to continue with the installation.

**Note:** Prime INFORMATION and some UniVerse (Prime/Ideal flavors) users should read VOC for (Master Directory) MD wherever MD is mentioned.

For more information on installing or uploading the Host Programs, please review Chapter 1 of the *HostAccess Host Integration Guide*.