



STINGRAY STUDIO 11.3 RELEASE NOTES

Stingray® Studio



Introduction

In this Document

These release notes contain a summary of new features and enhancements, late-breaking product issues, migration from earlier releases, and bug fixes.

For change logs or other information on previous releases, please contact Technical Support.

NOTE >> Rogue Wave products may contain undocumented interfaces. These interfaces are not supported for general use and may be changed or removed from release to release.

NOTE >> PLEASE NOTE: The version of this document in the product distribution is a snapshot at the time the product distribution was created. Additional information may be added after that time because of issues found during distribution testing or after the product is released. To be sure you have the most up-to-date information, see the version of this document on the Rogue Wave web site:

<http://www.roguewave.com/help-support/documentation/stingray>



New Features

Updated Platform Support

Specific platform information is not included in this document. Please see the Support Matrix at <http://www.roguewave.com/products-services/stingray>. Select the *Learn more about supported platforms* link. Note that the support matrix document displays **bold** text for any updates added in the current release.

FoundationEx

- Office 2013 Look and Feel

This includes

- XML for 2013 Styles and Accents
 - Backstage view
 - Backstage view Property Sheets and Property Pages
- Limitations
 - Only available on MSVS 2013 Update 4

Objective Grid for Microsoft .NET

- Office Open XML

This includes

- Reading and writing of xlsx files data only while preserving Excel formatting
 - Open, New, Save and SaveAs Office Open XML functionality
- Limitations
 - Requires Office Open XML SDK
 - Limited functionality available; see above for current functionality.
 - Formatting unavailable at this time



Bug Fixes

General

- Fixed Build errors when building with MSVS 2013 Update 4 and targeting to XP. [SRSTUDIO-2816]
- Fixed settings for Grid, Toolkit and Views for version comparisons of old vs new versioning in header files. [SRSTUDIO-2904]
- Fixed missing .pdb files for FoundationEx and GridEx. [SRSTUDIO-3095]

Edit

- Fixed line selection in Objective Edit. [SRSTUDIO-2944]

Grid

- Fixed crash in the HierarchicalGrid sample related to Formula Engine. [SRSTUDIO-1911]
- Fixed CGXSortInfo::autodetect to better distinguish between alphanumeric and dates. [SRSTUDIO-2013]
- Fixed Unresolved CGXBlockCmd if UndoRedo is unchecked in Grid build wizard. [SRSTUDIO-2067]
- Fixed ASSERT in CGXGridView HideCols() implementation. [SRSTUDIO-2723]
- Fixed wrong undo in Formula Grid. [SRSTUDIO-2738]
- Fixed crash in Excel read/write samples. [SRSTUDIO-2754]
- Fixed incorrect build configurations in PrintPreview Grid sample. [SRSTUDIO-2755]
- Fixed Grid builds when ADO is incorrectly targeted With Win8.1 X64 VC10/VC11/VC12. [SRSTUDIO-2827]
- Fixed scrollbar dragging behavior in Objective Grid. [SRSTUDIO-2959]
- Fixed compiler error in gxAdoEng.cpp with 32-bit builds under Win7/VS2012. [SRSTUDIO-3056]
- Fixed incorrect row height and column width with font change in Hierarchical Grids and ExcelGridAutomation samples. [SRSTUDIO-3763]

Grid for Microsoft .NET

- Fixed memory leaks in Objective Grid for .NET. [SRSTUDIO-3066]
- Updated Objective Grid for Microsoft .NET documentation. [SRSTUDIO-3337]

Toolkit

- Fixed DynaTree crash in Objective Toolkit for each Platform Toolset. [SRSTUDIO-3089]
- SECListBoxDirEditor: Fixed SECDirSelectDlg in SECListBoxDirEditor as modal. [SRSTUDIO-3931]

Views

- Fixed incorrect font resizing on zoom in Objective Views. [SRSTUDIO-2826]

FoundationEx

- Fixed assertion in FluentUI sample (with caveat). [SRSTUDIO-3490]
- Fixed FoundationEx drawing issue when MRU contains multiple checkboxes. [SRSTUDIO-3500]



Improvements

General

- Improved support for Visual Studio Toolsets for all Supported Platforms (ex: Compile on Win7 Target to WinXP. [SRSTUDIO-2913; SRSTUDIO-3009]
- Improved Platform Targeting to XP. [SRSTUDIO-2072]
- Improved Platform Targeting to Visual Studio 2013. [SRSTUDIO-2458]
- Improved Platform Targeting to Visual Studio 2012. [SRSTUDIO-2853]
- Improved Stingray Studio Documentation Set. [SRSTUDIO-3720; SRSTUDIO-3923; SRSTUDIO-3926; SRSTUDIO-3938]

Grid

- Improved display of 0 instead of -0 in Grid. [SRSTUDIO-744]
- Improved deletion of child rows in a hierarchical grid. [SRSTUDIO-2012]
- Improved public access to protected members for page break customization. [SRSTUDIO-2852]

Grid for Microsoft .NET

- Improved read-write of Excel .xlsx files using Open Office XML (data-only). [SRSTUDIO-3339]

Views

- Improved programmatic selection of an Objective View component. [SRSTUDIO-1998]
- Improved Objective Views for High DPI. Objective Views uses DPI scaling code to serialize correctly scaled DPI values. [SRSTUDIO-3567]

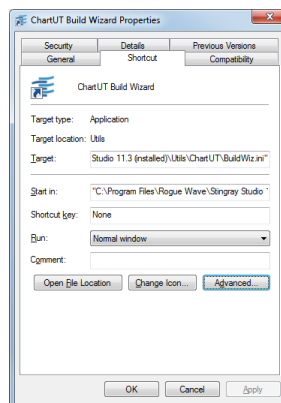
Limitations

Installation

General Installation Issues

NOTE >> Each Stingray Studio release is a replacement for, not an upgrade to, the previous version. Always perform an installation into a new area, and not into the same install directory as a previous version.

- Build Wizard changes and limitations. [SRSTUDIO-4161]
All the individual product BuildWiz.exe's have been replaced with a single build wizard executable, BuildWiz.exe. This build wizard is located in the ..\Utils subdirectory. Batch files (*.cmd) were added to run each product's individual BuildWizard based on their respective ..\Utils\\BuildWiz.ini file so that they will run correctly from the Windows File Explorer.
During installation the build wizards are added to the Windows Start Menu (Windows 7 or lower) or Start Screen (Windows 8.1 or higher). The shortcut links added to these locations may not run as administrator. To run the Build Wizards as Administrator, right click on the build wizard's shortcut, select Properties, go to the Shortcut tab, select the Advanced button and check the Run As Administrator checkbox (shown below). The same option is also available under the Compatibility tab.



NOTE: Build Wizards are NOT accessible from the Studio Assistant for this release.

Late Breaking Changes

- Building the SFLEX library or an SFLEX sample with any static LIB build configuration with MSVS 2010 SP1 results in a build error. [SRSTUDIO-4162]

There are inconsistencies with SDKs that cause this error.

SFLEX samples fail to build any LIB build configuration, with an error message as shown below:

```
error LNK2005: "class CGlobalUtils afxGlobalUtils"
(?afxGlobalUtils@@3VCGlobalUtils@@A) already defined in
nafxcw.lib(afxglobalutils.obj)
C:\Program Files\Rogue Wave\Stingray Studio 11.3\Samples\FoundationEx\
```

To fix this issue, replace line 58 (approx.) in the FoundationEx source file, SflVisualMgrOffice2013.cpp with

```
#if (defined _AFXDLL || defined _SFLEXDLL)
CGlobalUtils afxGlobalUtils;
#endif
```

- The SFLEX sample, FluentUI, may assert when switching between build configurations. This sample writes its values to the following Windows registry location,

```
HKEY_CURRENT_USER\Software\Local AppWizard-Generated Applications\FluentUI.
```

If this sample asserts, removing this registry key and all its previous values resolves this issue. Run Regedit.exe and delete the key specified above.

Documentation

New Documentation

The individual product User Guides and Reference Guides have been replaced with a single User Guide and a single Reference Guide, both of which contain all the Stingray Studio products. We have also restructured and centralized all the documentation in the ..\Docs subdirectory. A single Table of Contents is provided in HTML format called index.html. This convenient index page contains links or references to all the Stingray Studio documentation.

Inter-document Hyperlinks do not Work in the PDF Documents

The PDF documents shipped with Stingray Studio are provided so customers can print the documents if they choose. These documents are not intended as primary access to the product documentation, and may not be as fully functional as the HTML documentation. One known issue is that hyperlinks between these documents do not work, and other issues may exist.

Windows 8 PDF Reader May Behave Inconsistently

The native Windows 8 or higher PDF Reader may behave inconsistently; it has been observed that hypertext links are not processed correctly. Instead, use Adobe's free Acrobat Reader.



Rogue Wave provides software development tools for mission-critical applications. Our trusted solutions address the growing complexity of building great software and accelerates the value gained from code across the enterprise. Rogue Wave's portfolio of complementary, cross-platform tools helps developers quickly build applications for strategic software initiatives. With Rogue Wave, customers improve software quality and ensure code integrity, while shortening development cycle times.